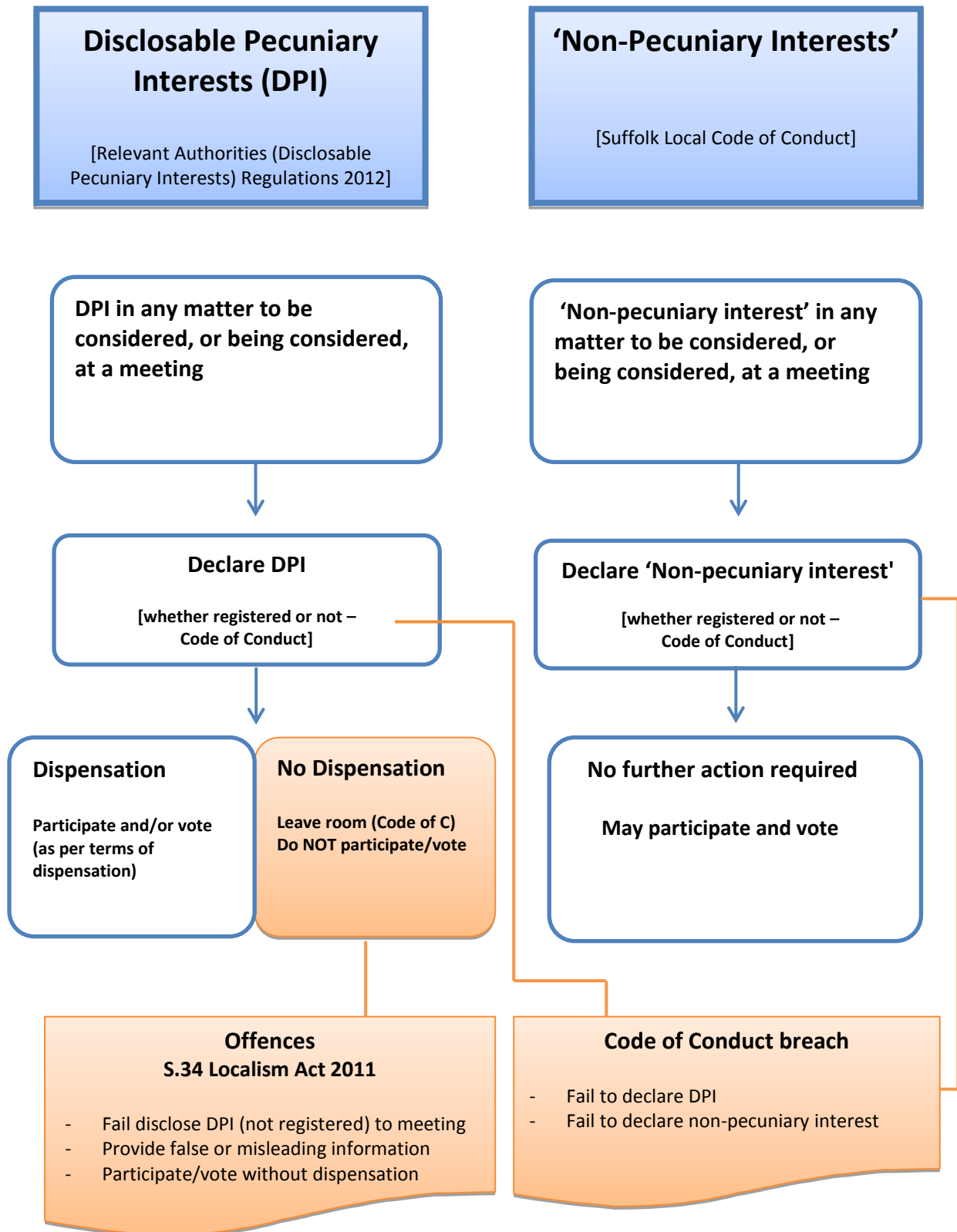


## Councillor Interests at Meetings



## Disclosable Pecuniary Interests – Relevant Authorities (Disclosable Pecuniary Interests) Regulations 2012

Employment, office, trade, profession or vocation	Any employment, office, trade, profession or vocation carried on for profit or gain by the member or by his/her spouse or civil partner or by the person with whom the member is living as if they were spouses/civil partners.
Sponsorship	Any payment or provision of any other financial benefit (other than from the Council) made to the member during the 12 month period ending on the latest date referred to in paragraph 6 above for expenses incurred by him/her in carrying out his/her duties as a member, or towards his/her election expenses. This includes any payment or financial benefit from a trade union within the meaning of the Trade Union and Labour Relations (Consolidation) Act 1992.
Contracts	Any contract made between the member or his/her spouse or civil partner or the person with whom the member is living as if they were spouses/civil partners (or a firm in which such person is a partner, or an incorporated body of which such person is a director* or a body that such person has a beneficial interest in the securities of*) and the Council — (a) under which goods or services are to be provided or works are to be executed; and (b) which has not been fully discharged.
Land	Any beneficial interest in land held by the member or by his/her spouse or civil partner or by the person with whom the member is living as if they were spouses/civil partner which is within the area of the Council. 'Land' excludes an easement, servitude, interest or right in or over land which does not give the member or his/her spouse or civil partner or the person with whom the member is living as if they were spouses/civil partners (alone or jointly with another) a right to occupy or to receive income.
Licences	Any licence (alone or jointly with others) held by the member or by his/her spouse or civil partner or by the person with whom the member is living as if they were spouses/civil partners to occupy land in the area of the Council for a month or longer.
Corporate tenancies	Any tenancy where (to the member's knowledge)— (a) the landlord is the Council; and (b) the tenant is a body that the member, or his/her spouse or civil partner or the person with whom the member is living as if they were spouses/civil partners is a partner of or a director* of or has a beneficial interest in the securities* of.
Securities	Any beneficial interest held by the member or by his/her spouse or civil partner or by the person with whom the member is living as if they were spouses/civil partners in securities* of a body where— (a) that body (to the member's knowledge) has a place of business or land in the area of the Council; and (b) either— (i) the total nominal value of the securities* exceeds £25,000 or one hundredth of the total issued share capital of that body; or (ii) if the share capital of that body is of more than one class, the total nominal value of the shares of any one class in which the member, or his/her spouse or civil partner or the person with whom the member is living as if they were spouses/civil partners has a beneficial interest exceeds one hundredth of the total issued share capital of that class.

\*'Director' includes a member of the committee of management of an industrial and provident society.

\*'Securities' means shares, debentures, debenture stock, loan stock, bonds, units of a collective investment scheme within the meaning of the Financial Services and Markets Act 2000 and other securities of any description, other than money deposited with a building society.

## Non-Pecuniary Interests – Suffolk Local Code of Conduct

An interest which relates to or is likely to affect:

- (i) any body of which the member is in a position of general control or management and to which he/she is appointed or nominated by the Council;
- (ii) any body—
  - (a) exercising functions of a public nature;
  - (b) directed to charitable purposes; or
  - (c) one of whose principal purposes includes the influence of public opinion or policy (including any political party or trade union)
 of which you are a member or in a position of general control or management;
- (iii) any person from whom you have received a gift or hospitality with an estimated value of at least £25.